

FREIGHT CARS

Journal



UNION PACIFIC'S COVERED HOPPERS
CANADIAN NATIONAL BOX CARS
'SPINE' CAR ROSTER
MW/COMPANY SERVICE 1

55

FREIGHT CARS JOURNAL

Issue 55 Vol.10 No. 6 June 1993

Editors:

David G. Casdorff
Eric A. Neubauer
James A. Kinkaid

Index Editor:

Mark Kindrachuk

SUBSCRIPTION INFORMATION

Subscription/membership for four (4) issues (not per year): \$20.00 (USA). \$22.00 (Canada). \$35.00 (Other Countries). \$50.00 (Institutions). *Freight Cars Journal* is published 4-12 times per year depending on available materials. Please make checks payable to *Freight Cars Journal*. Send dues/subscriptions to: *Freight Cars Journal* P.O. Box 2480, Monrovia, CA 91017. Published by the Society of Freight Car Historians.

COPYRIGHT © 1993: Society of Freight Car Historians. ISSN 0742-9355. All rights reserved.

NOTICE

Whilst every effort is made to ensure the accuracy of the information and data forming the content of this publication, the authors, editors, and publishers cannot be held responsible for errors or omission, or for any loss or damage occasioned by any person using the information contained in this publication. The opinions expressed by the contributors are their own and do not necessarily reflect the views of the editors, publisher or other members of the Society.

CHANGES OF ADDRESS

All changes of address must include both the old and new address. Address changes must be sent to each of the Society's publications separately. Members and subscribers must notify our office of any change in address at least four weeks in advance. Failure of notification may result in additional charges for return postage and re-mailing fees.

Domestic Claims for nonreceipt should be made within 90 days of the month of publication, overseas claims within 180 days. Thereafter, the regular back issue rate will be charged for replacement.

Freight Cars Journal is published for the Society by AG PRESS, Manhattan, KS. Printed in the United States of America.

ZIP CODE

Please note that contrary to the popular belief that the +4 digits are always the same as the box number (or last four whichever is applicable), that this is NOT true with our address here at *Freight Cars Journal*. Yes, our box number is 2480 and our +4 code is 6480.

FRONT COVER:

MP 705560 was painted at the De Soto shops in February 1987 with the new UP herald. This is an ACF 2980 - Just one of the many types of covered hoppers operated by the Union Pacific today.

MODERN UNION PACIFIC COVERED HOPPER TYPES. PART 1: AAR CAR TYPE CODES C111, C112 & C312

by David G. Casdorff

Research Assistance: Eric A Neubauer and Carl W. Shaver.

Photos by David G. Casdorff and Mike B. Foley.

INTRODUCTION

The 1990's Union Pacific freight car fleet exhibits quite a variety of covered hopper cars. Included are cars from the Missouri Pacific System, Western Pacific, Missouri-Kansas-Texas, former Rock Island and of course the Union Pacific's own.

AAR car type codes C111 (less than 3000 cubic foot capacity) and C112 (3000 to 3999 cubic foot capacity) are equipped with gravity outlets. AAR car type code C312 cars (3000 to 3999 cubic foot capacity) are equipped with gravity and pneumatic outlets.

These three AAR car type codes groups primarily cover cars designed for cement and dense building materials products. Cars in the upper limits of the C112 and C312 cubic foot capacity sizes are often "intermediate" cars leading to the next larger group of covered hoppers commonly referred to as "grain hoppers."

UP's COVERED HOPPER TYPES

The following are listed alphanumerically by builder (or rebuilder) and cubic foot capacity. Please note that **MP** includes former CEI, MI, TP etc and **MKT** includes BKTY.

ACF 2970

C111. 100-ton. Plate B. Built 1967. Center Flow design. Two bay. Gravity unloading. Four 30" round hatches or continuous hatches. **MP** (4/30"), **UP** (continuous).

ACF "2971"

C111. 100-ton. Plate B. Built 1974-75. Two bay. Gravity unloading. Four 30" round hatches. **MKT**, **MP**.

ACF 2980

C111. 100-ton. Plate B. Built 1978-81. Two bay. Gravity unloading. Four 30" round hatches. **MKT**, **MP**.

ACF 3500

C112. 70-ton or 100-ton. Plate B. Built 1964-65. Three bay. Gravity unloading. Six 30" round hatches. **MKT**

(70-ton), **MP** (100-ton).

ACF 3960

C112. 100-ton. Plate B. Built 1963. Three bay (with the appearance of six from the side). Gravity unloading. Five 30" round hatches. **MP**.

CFC 3000 (Shortened ACF 4650)

C112. 100-ton. Plate C. Rebuilt 1986 by Hoosier Rail Car for Chicago Freight Car Leasing from ACF 4650 cubic foot capacity covered hoppers. Two bay. Gravity unloading. Three 30" round hatches. **MKT**.

GSC 3000

C112. 100-ton. Plate B. Built 1984-85. Two bay. Gravity unloading. Three 30" round hatches. **MP**, **UP**.

POX 3000

C112. 100-ton. Plate B. Built 1982. Two bay. Gravity unloading. Gravity unloading. Eight round hatches. **MKT**.

PS 2600

C111. 100-ton. Plate C. Built 1966. Two bay. Gravity unloading. Eight round hatches. **MKT**.

PS 2950

C111. 100-ton. Plate B. Built 1977. Two bay. Gravity unloading. Four 30" round hatches. **MP**.

PS 3010

C112. 100-ton. Plate B. Built 1969. Gravity unloading. Eight 30" round hatches. **MP**.

PS 3510

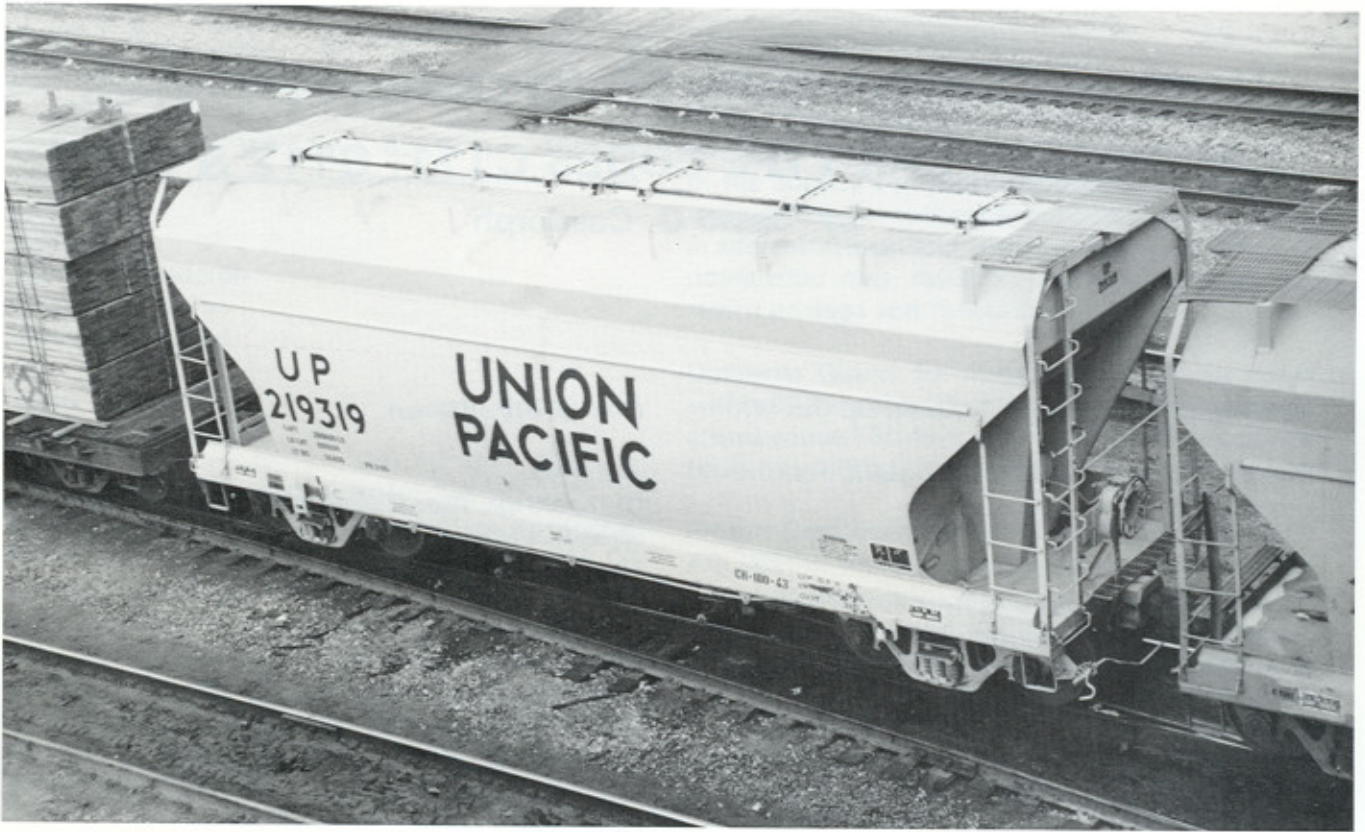
C112. 100-ton. Plate B. Built 1962. Three bay. Gravity unloading. Ten 30" round hatches. **MP**.

PS 3572

C312 and C112. 90-ton. Plate B. Built 1962-64. Three bay. Gravity & pneumatic unloading or gravity only unloading. Ten 30" round hatches. **UP**.

TRN 3000

C112. 100-ton. Plate B. Built 1988. Two bay. Three 30" round hatches. **MKT**.



(Above) Type ACF 2970. UP 219319. Series UP 219300-219800. These are former Rock Island cars. This car was painted at the Pocatello shops in March 1985 in the light gray scheme. (Below) UP 219401 was painted in 1988 in the darker (slate) gray scheme.





(Above) UP 219497 was painted UP PO 12-88. This car exhibits the lighter gray scheme. Note also the newer reduced stencilling requirements on this car showing only the load limit (versus previously stencilled nominal capacity and light weight). (Below) UP 219734 is a classic depiction of its former ROCK paint scheme. Shown here on October 17, 1983 in Colton, CA.





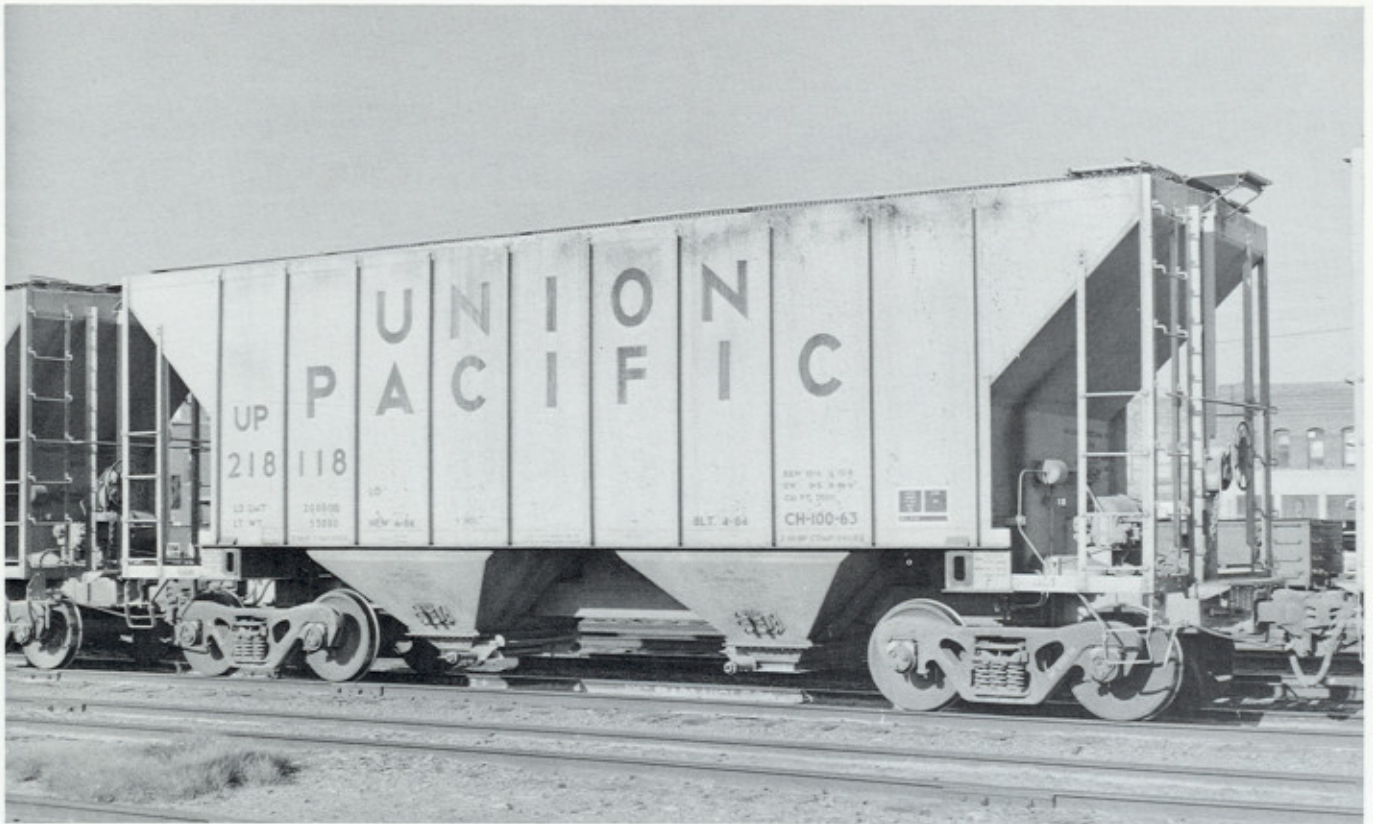
(Above) Type ACF 2980. MKT 407 was built in 1979 by ACF's Milton plant. Series MKT 400-499. Mike B. Foley photo. (Below). MP 705560 was built 7-81. Series MP 705500-705999. This car was painted and lined at the DeSoto shops in 2-87.





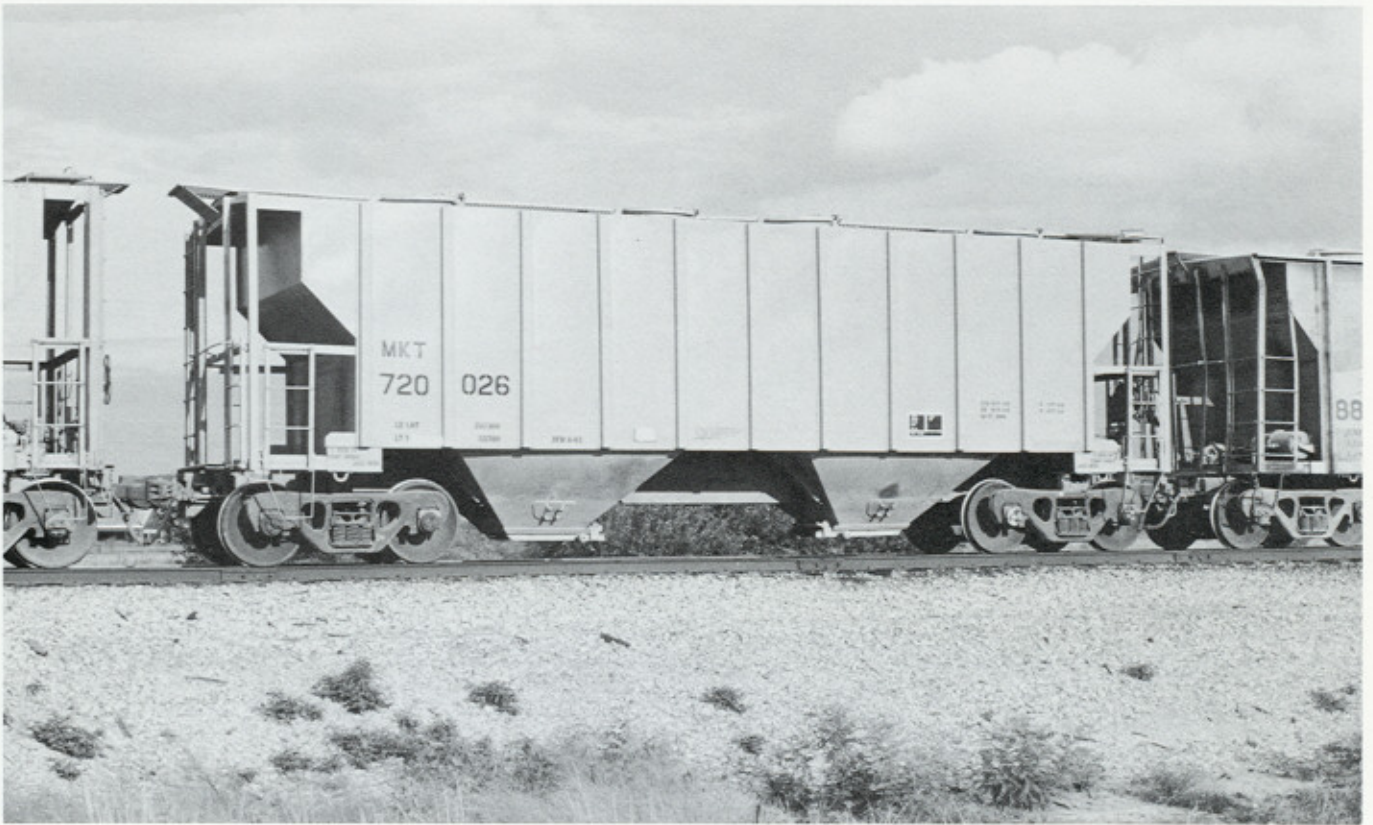
(Above) MP 705817 in its original paint scheme for the Missouri Pacific. (Below) Type CFC 3000. MKT 6681 was shortened from a larger 4650 cfc covered hopper in 7-86 by Hoosier Rail Car for Chicago Freight Car Leasing. Series MKT 6664-6693. Mike B. Foley photo.





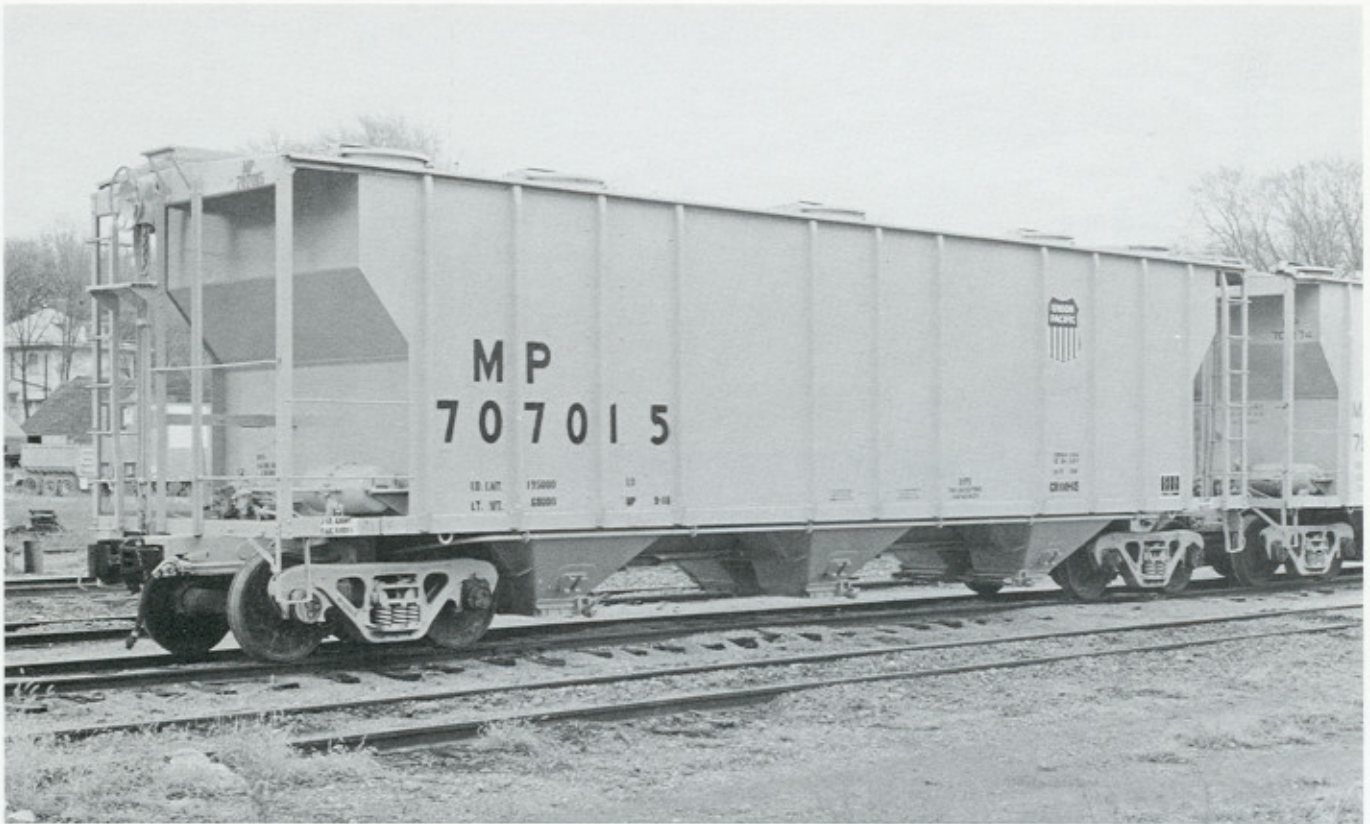
(Above) Type GSC 3000. UP 218118. Built 4-84 by Greenville Steel Car. Series 218000-218299. (Below) UP 218316 was built in 4-85 by Greenville. Series UP 218300-218399. Both cars on this page were photographed at Laramie WY in August 1992.





(Above) Type POX 3000. MKT 720026 was built in 6-82 MFC CLIL (Portec). Series MKT 720000-720029. Mike B. Foley photo. (Below) Type PS 2600. BKTY 1318 was built in 1966 by Pullman-Standard. Series BKTY 1300-1374. Photographed in Lincoln NE August 1992.



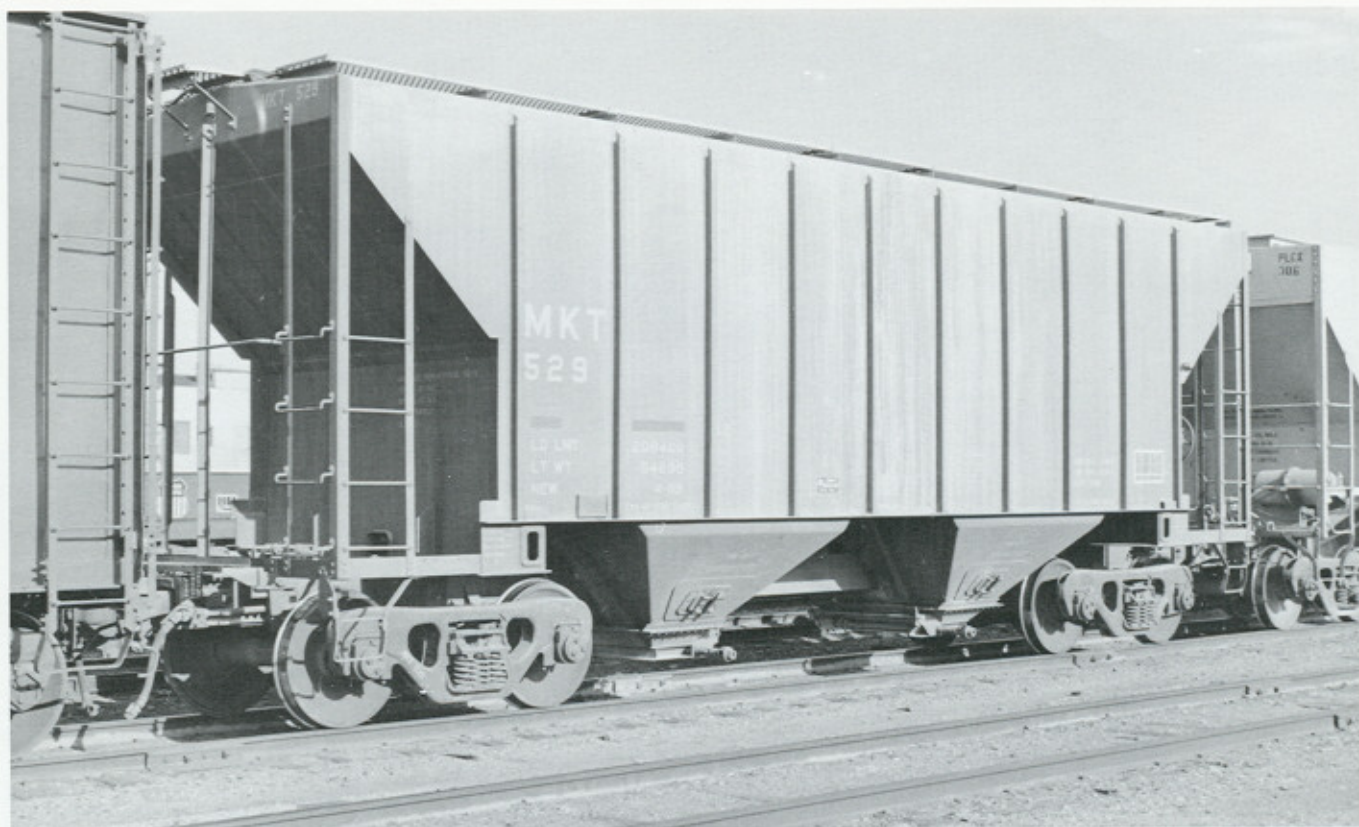


(Above) Type PS 3510. MP 707015 was built in 1962 by Pullman-Standard. It was refurbished in September 1988. (Below) Type PS 3572. UP 19672 was built in 1962 by Pullman-Standard. Note the gravity and pneumatic outlets. Painted in June 1988. Series UP 19300-19699.





(Above) UP 19738 was built in 1963 by Pullman-Standard. Series 19700-19749. Nearly identical to the UP 19300-series but, this series has gravity outlets only. (Below) Type TRN 3000. MKT 529. The "Katy" received 100 of these in 1988 from Trinity's Greenville plant. These are very similar, if not identical to the Type GSC 3000.



CANADIAN NATIONAL FREIGHT CAR PICTORIAL.

PART 1. 40-FOOT BOX CARS



(Above) CN 445197. Built 1-57. Series CN 445000-445955. Painted 4-87. Restricted for Churchill & Thunder Bay grain service only. Warman, SK. April 20, 1987. (Below) CN 426741. Built 8-53. Series CN 426000-427606. Saskatoon SK. April 21, 1991. Mark Kindrachuk photos.





(Above) CN 591687. Built 4-49. Series CN 591454-591928. Prince Albert. November 10, 1987. (Below) CN 575716. Series CN 575000-576999. Saskatoon, SK. January 17, 1987. Mark Kindrachuk photos.





(Above) CN 542746. Built 7-56. Series CN 540760-545759. Saskatoon, SK. January 17, 1987. (Below) CN 428123. Built 8-52. Series CN 427800-428649. Saskatoon, SK. January 24, 1987. Mark Kindrachuk photos.





(Above) CN 567990. Built 4-54. Series CN 566500-567999. Saskatoon, SK. January 31, 1987. (Below) CN 428124. Built 5-54. Series CN 427800-428649. Saskatoon, SK. April 21 1991. Mark Kindrachuk photos.



ROSTER OF THE "Q" CARS. MARCH 1993

by DAVID G. CASDORPH

INIT:	NUMBER:	SERIES:	CLASS:	BUILT:	BLDR:	UNITS:	TYPE:	AXLES:	NOTE:
ATSF	298946	298988	FT-101	3-7/80	ATSF TS	10	ARTC	2	1
ATSF	298989	298997	FT-93	4-5/78	ATSF TS	10	ARTC	2	
ATSF	298998	298998	FT-93	5/78	ATSF TS	10	ARTC	2	
ATSF	298999	298999	FT-92	1977	ATSF TS	10	ARTC	2	
BN	637100	637107	-----	9-10/83	ACF STL	8	ARTC	2	2
BN	637300	637317	-----	8-84, 7-85	PCF RN	3	ARTC	2	3
BN	637500	637503	-----	1983	ACF STL	4	ARTC	2	4
EELX	1983	1983	-----	1983	EVANS	1	SNGL	1	
GNAX	999	999	-----	9/84	TC CH	1	SNGL	1	
KWTX	800800	800817	-----	8/84, 7-85	PCF RN	3	ARTC	2	5
NTTX	66000	66039	RSF50	4/87	PSM BESS	5	ARTC	2	
NTTX	66040	66059	RSF50A	6/87	PSM BESS	5	ARTC	2	
NTTX	66060	66099	RSF50B	8-12/88	TRINITY	5	ARTC	2	
NTTX	66100	66139	RSF50B	2-4/89	TRINITY	5	ARTC	2	
NTTX	67000	67019	BSF50	8-/87	BSC JTN	5	ARTC	2	
NTTX	67020	67059	BSF50A	9/87	BSC JTN	5	ARTC	2	
NTTX	67060	67089	BSF50B	10/87	BSC JTN	5	ARTC	2	
NTTX	67090	67149	BSF50C	10-12/88	BSC JTN	5	ARTC	2	
NTTX	67150	67199	BSF50D	12/88	BSC JTN	5	ARTC	2	
NTTX	68000	68009	YSF50	4,6-88	HYUNDAI	5	ARTC	2	6
NTTX	110025	110027				5	ARTC	2	
NTTX	110028	110028	RSF50P	2/87	TRINITY	5	ARTC	2	
NTTX	110029	110029				5	ARTC	2	
NTTX	110030	110030		11/87	HYUNDAI	5	ARTC	2	7
PLWX	90	90	-----	9/83		1	SNGL	1	
PSMX	82	82	-----	10/82	PS HA	1	SNGL		
RTTX	165000	165147	4BSF11	(5-12/91)	(HII HBSC)	4	DRAW	2	
RTTX	165202	165500	2BSF11	(1992-93)	(HII HBSC)	2	DRAW	2	
SOU	161000	161000	-----	5/83	EVANS	2	ARTC	2	
SSIX	100101	100102	-----	3/82	FMC P	10	ARTC	2	
SSIX	100104	100104	-----	1983	FMC P	4	ARTC	2	
SSW	90049	90058	FCA-125-1	12/82-1/83	FMC P	4	ARTC	2	
SSW	90059	90078	FCA-250-1	1-3/83	FMC P	8	ARTC	2	
TTAX	76000	76229	RAF55	10/89-3/90	TRINITY	5	ARTC	2	
TTAX	76230	76239	RAF55B		TRINITY	5	ARTC	2	
TTAX	76240	76524	RAF55	4-6/90	TRINITY	5	ARTC	2	
TTAX	76525	76601	RAF55B	7-11/90	TRINITY	5	ARTC	2	
TTAX	76602	76706	RAF55	1-4/91	TRINITY	5	ARTC	2	
TTAX	76707	76846	RAF55B	5-8/91	TRINITY	5	ARTC	2	
TTAX	76862	76936	RAF55B	7-10/91	TRINITY	5	ARTC	2	
TTAX	76937	76986	RAF55B	4-5/92	TRINITY	5	ARTC	2	
TTAX	76987	76999	RAF55C	6/92	TRINITY	5	ARTC	2	
TTAX	77000	77199	TAF55	3-7/90	TC CH	5	ARTC	2	
TTAX	77200	77324	TAF55	8-10/90	TC CH	5	ARTC	2	
TTAX	77325	77424	TAF55	7-8/91	TC CH	5	ARTC	2	
TTAX	77425	77504	TAF55	8-10/91	TC CH	5	ARTC	2	
TTAX	78000	78199	BAF55	12/89-2/90	BSC JTN	5	ARTC	2	
TTAX	78200	78359	BAF55A	4-5/90	BSC JTN	5	ARTC	2	
TTAX	78360	78399	BAF55B	6/90	BSC JTN	5	ARTC	2	
TTAX	78400	78419	BAF55B	6/90	BSC JTN	5	ARTC	2	
TTAX	78420	78584	BAF55A	7-9/90	BSC JTN	5	ARTC	2	
TTAX	78585	78699	BAF55B	9-12/90	BSC JTN	5	ARTC	2	
TTAX	78700	78769	BAF55B	2-3/91	BSC JTN	5	ARTC	2	
TTAX	78770	78819	JAF55	4-5/92	JAC JTN	5	ARTC	2	
TTAX	78820	78869	JAF55A	5-6/92	JAC JTN	5	ARTC	2	

INIT:	NUMBER:	SERIES:	CLASS:	BUILT:	BLDR:	UNITS:	TYPE:	AXLES:	NOTE:
TTAX	79000	79124	GAF55B	10/90-2/91	GUX P	5	ARTC	2	
TTAX	79500	79536	RAF55C	6/92	TRINITY	5	ARTC	2	
TTAX	79537	79636	RAF55D	8-11/92	TRINITY	5	ARTC	2	
TTAX	79637	79756	RAF55D	1-3/93	TRINITY	5	ARTC	2	
TTAX	79757	79796	RAF55D	2-93	TRINITY	5	ARTC	2	
TTAX	110040	110040				5	ARTC	2	
TTAX	110052	110052	RAF50P	2/91	TRINITY	5	ARTC	2	
TTAX	780000	780029	JAF55A	7/92	JAC JTN	5	ARTC	2	
TTAX	780030	780179	JAF55B	8-11/92	JAC JTN	5	ARTC	2	
TTAX	780180	780399	JAF55B	1/93	JAC JTN	5	ARTC	2	
TTEX	161000	161109	F89F2	(9-11/88)	(CC ML)	2	DRAW	2	
TTEX	161110	161199	F89F2	9-11/88)	(BSC JTN)	2	DRAW	2	
TTEX	353000	353999	various	(1992-93)	(various)	2	DRAW	2	
TTEX	354000	354149	various	(1-3/93)	(CC ML)	2	DRAW	2	8
TTFX	60000	60100	ALF40	10-12/81	ACF STL	4	DRAW	1	
TTFX	110012	110012	PLF40		PS	4			
TTLX	60200	60399	BLF50	4-8-88	BSC JTN	5	ARTC	2	
TTLX	60400	60584	TLF51	6-8/89	TC CH	5	ARTC	2	
TTOX	145595	146094	RLF10A	12/88-5/89	TRN GV	1	SNGL	1	
TTUX	110013	110013	PLF10	2/83	PLC DAN	1	SNGL	1	
TTUX	110016	110016	HLF200			1	SNGL	1	
TTUX	120000	120017	PLF100	9-10/83	PLC DAN	1	SNGL	1	9
TTUX	121000	121049	TLF10A	5/84	TC CH	1	SNGL	1	
TTUX	121050	121499	TLF10	6-8/84	TC CH	1	SNGL	1	
TTUX	121500	121649	TLF10A	8-9/86	TC CRTS	1	SNGL	1	
TTUX	121650	121699				1	SNGL	1	
TTUX	121700	121944	TLF10	7-9/87	TC CRTS	1	SNGL	1	
TTUX	130000	130249	ULF10	6-8/84	UAC CRTS	1	SNGL	1	
TTUX	130250	130349	YLF10	11-12/86	HYUNDAI	1	SNGL	1	10
TTUX	130350	130399	YLF10	8-9/87	HYUNDAI	1	SNGL	1	10
TTUX	135000	135199	OLF10A	9-12/84	MFC CLIL	1	SNGL	1	
TTUX	135500	135749	BLF10	10-11/85	BSC JTN	1	SNGL	1	
TTUX	140000	140379	CLF10	8-10/84	PCF RN	1	SNGL	1	
TTUX	145000	145294	RLF10	9/84-1/85	PSM BESS	1	SNGL	1	
TTUX	145295	145594	RLF10A	6-10/86	PSM BESS	1	SNGL	1	
TTX	110001	110001	HIF100			2			
UP	252000	252001	SK-50-1	8/83	UP AT	5	ARTC	2	
UTTX	60101	60120	ILF50A	12/83	FMC P	5	ARTC	1	
UTTX	60121	60167	ILF50A	1984	FMC P	5	ARTC	1	
UTTX	60168	60195	ILF50B	9-11/84	FMC P	5	ARTC	1	
UTTX	61000	61019	TLF50A	2-3/84	TC CH	5	ARTC	1	
UTTX	110014	110014	TLF50	10/82	TC CH	5	ARTC	2	
UTTX	110015	110015	ILF50		FMC	5	ARTC	1	

ROSTER NOTES

1. All cars converted to 8'8" wide platforms for wide track trailers except ATSF 298948. ATSF 298965 converted to COFC only and reclassified FT-103.

2. Off roster by 1992.

3. ex KWTX 800800's (1987).

4. Off roster by 1992.

5. Number series not confirmed. To BN 637300-637317 (1987). These are the prototypes for the Front Range 90' "Impack" flat car kits in HO scale.

6. Final assembly by Gunderson, Portland OR.

7. Final Assembly by Cal Pro, Mira Loma, CA.

8. Series still in progress at time of writing. Additional cars expected.

9. TTUX 120009 build with aluminum platforms.

10. Final assembly Gunderson, Portland, OR.

GENERAL NOTES

A. AAR car type code Q are presently the lightweight, low profile intermodal cars (also known as "spine" cars) and the rebuilt multi-platform (e.g. TTEX and RTTX 165000's) intermodal cars. This code also includes the carless technology units (e.g. Roadrailleurs) but are not included in this roster.

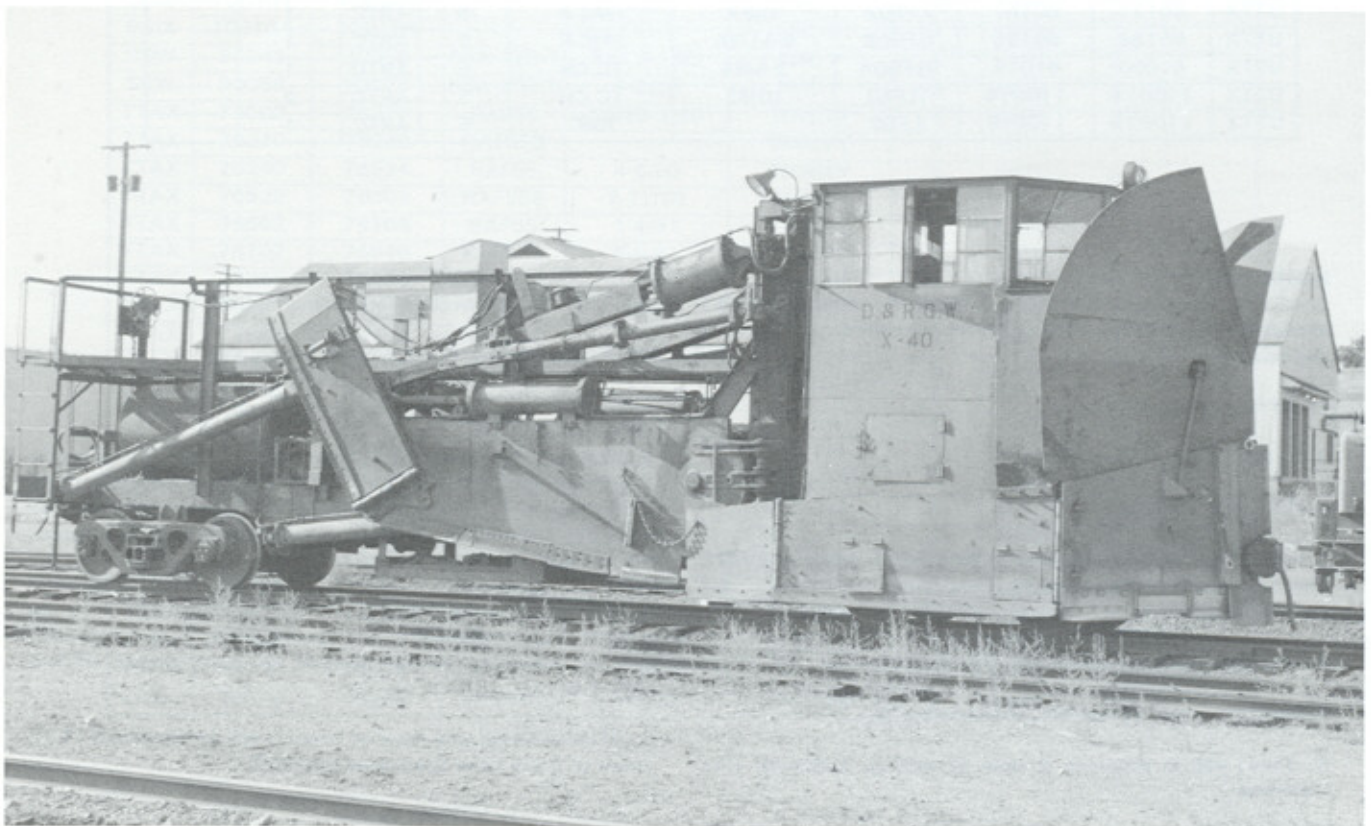
B. The "All Purpose Spine Cars," (TTAX) presently have the capacity to carry 53-foot trailers/containers on every other unit. It is expected that newer designs will have greater 53-foot capacity.

C. TTUX initialed cars have all been or will be relettered TTOX (most of these have been done by 1993).

MW/COMPANY SERVICE 1



(Above) SCL 771946 MW. Jordan Spreader #1441 was built in January 1959. Shown here in Cartersville GA in April 1992. (Below) DRGW X-40. Jordan Spreader found in Provo UT on July 27, 1984. David G. Casdorff photos.



ABBREVIATIONS

GENERAL

-	Through, numbers inclusive
=	Through, month dates inclusive
+	Between, numbers <i>not</i> inclusive
/	Month/Date delineator
Artc	Articulated
blt	Date built, new
cu ft, cuft	Capacity in cubic feet
Draw	Drawbar connected
<i>e.g.</i>	For example
ex	Previously (compare to <i>nee</i>)
GERSCO	General Electric Railcar Services Corp
IL	Inside length <i>or</i> loading length
<i>nee</i>	Originally
Plate	Clearance "plates." (C, E, F, F+ etc)
reblt	Date rebuilt
Sngl	Single unit

CURRENT FREIGHT CAR BUILDERS

ACF HTG	ACF Industries, Huntington WV
ACF MILT	ACF Industries, Milton, PA
GUX P	Gunderson, Portland OR
JAC JTN	Johnstown America, Johnstown, PA
TC CH	Thrall Car, Chicago Heights IL
TCW	Thrall Car, Winder GA
TRI MO	Trinity Industries, Mt Orab OH
TRN BESS	Trinity Industries, Bessemer AL
TRN FW	Trinity Industries, Fort Worth TX
TRN GV	Trinity Industries, Greenville, PA
TRN LGV	Trinity Industries, Longview TX
TRN OKC	Trinity Industries, Oklahoma City OK
TRN TULS	Trinity Industries, Tulsa OK
UTC ECH	Union Tank Car, East Chicago IN

CSXT 1989 Freight Car Review. *Articles and rosters on Seaboard's pulpwood cars, CSX logos, Acquisitions etc.* 50 photos. 36 pages. **\$15.95**

RBOX Freight Car Roster and Pictorial. *Detailed roster of Trailer Train's "Railbox" fleet of the late Seventies. Detail and roster photos show differences in box car design. Also included is a roster of RBOX dispositions.* 44 photos. 46 pages. **\$15.00**

BC Rail Freight Car Roster and Pictorial. *Detailed examination of this interesting railroad's unique fleet of freight cars serving the northwestern part of North America. Detailed roster. 64 quarter-page color photos. Includes rarely seen intermodal equipment!* **\$30.00**

CP Rail Freight Car Pictorial. (FCJ37/THM1) *60 large B&W photos show how one of Canada's two largest railroads moves freight on the rails. Detailed captions with roster notes.* 60 B&W photos. 32 pages. **\$15.00**

Reefers: A short history of refrigerator cars in America 1840-1984. (FCJ44) *Historical essay on the development of the mighty refrigerator car. 19 large B&W photos, 2 figures, 4 graphs, 2 charts.* **\$14.95**

Modern Freight Cars: A Photo Anthology. *102 half-page B&W photos of modern freight cars arranged by mini-subjects. Detailed captions tell of the car's history and importance.* 72 pages. **\$30.00**

Modern Piggyback Trailers. *190 half-page photos. Chapters on railroads, Transamerica Leasing, XTRA Inc, motor carriers, private operators etc.* 112 pages. **\$40.00**

Freight Cars Journal Members may deduct 20% off of above titles only.

Add \$3.00 per order for shipping (\$4.00 Canada / \$6.00 others)

Freight Cars Journal
P.O. Box 2480

**Complete Back Issue List of Freight Cars Journal
(Not all are currently available - see below for
availability)**

1. August 1983. Railgon Roster: FMC 5347 Box cars.
2. December 1983. P&R Eight-Wheel Coal Cars; Modern Sulphuric Acid Tank Cars.
3. March 1984. Guilford (B&M, D&H, MEC) Roster; NH Steel Underframe Wooden Box cars.
4. June 1984. Modeling GN 40-foot Box cars; FMC Production List 1; New and Rebuilt Box Cars of the 70s and 80s; The ACF CH-29 Covered Hopper.
5. October 1984. Freight Car Roster of DRGW; GATC Dry-Flo 3500; P&R Four-Wheel Coal Cars; FMC Production List 2.
6. December 1984. WP 3011-3050 Fifty-ton Box Cars; FMC Production List 3; Reading Series 30400-30549; Gondola; Freight Car Roster of Bay State Milling.
7. February 1985. MP's Quasi-Articulated Airslide Covered Hoppers; FCJ's 1985 Forty-foot Box Car Survey; FMC Production List 4.
8. March 1985. Introduction of the 65-foot Gondola; Checklist of Freight Car Builders 1850-1985; FMC Production List 5.
9. April 1985. Railroad Roster; Trailer Train's New RTTX Conversions.
10. July 1985. Modeling the SP 605550-605699 Modern Forty-foot Box Car in HO Scale; Reading Eight-Wheel Caboose; Utility Fuels Freight Car Roster; FMC Production List 6.
11. August 1985. Singles, Artics and Stacks: America's Intermodal Freight Cars of the 80's
12. October 1985. Lehigh & New England Freight Car Roster.
- 13/14. January 1986. Fishbelly Hopper Cars; Modeling Monon Box Car No 1; Stack Car Update.
- 15/16. April 1986. T&P 74008-74062 50-ton Box Cars. Modeling Two Southern 40-foot Box Cars in HO Scale; 89'4" Piggyback Flats from Athearn Parts; The NYC's 1916 All-Steel Box Car Project.
- 17/18. July 1986. Freight Car Roster of the Stephenville North and South Texas; REading Class XAPa Auto Parts Box Cars; All Time Roster of WP Caboose Cars.
- 19/20. October 1986. NYC's All-Steel House Car of 1912; DL&W Ice Car Series 5700-5799. Sherman, Shreveport & Southern Freight Cars; General American's 70-ton Refrigerator Car of 1937.
21. March 1987. Reading Co Freight Equipment Numerical List 1885-1901.
22. May 1987. RF&P Freight Car Roster c 1985; White Pass & Yukon Freight Car Roster.
23. July 1987. SP's 1987 Open Hopper Fleet; DRGW Freight car Roster of the 70s and 80s.
24. November 1987. C&WC 36-foot Boxcar #1939. The HO Scale Auto Parts Box Cars of Mark Ala.
25. January 1988. Missouri Pacific Freight Car Roster.
26. April 1988. NP Freight Car Roster c. 1940; WC's new Paint Scheme; RBOX renumberings.
27. July 1988. Santa Fe 50-foot 100-ton Double Door Plate F Box Cars of the 1970s; McKean HO 50-foot ACF Box Car; MP Piggyback Trailers; Big Three Industries Photoroster.
28. October 1988. A Journey to the Land of Phosphate; General American Transportation Refrigerator Car Assignments 1952.
29. January 1989. Reading Freight Car Numerical List 1902-1938; UP Express Boxcars B-50-25; CNW and the Ralston Purina RBLs. EL Reno's Box Cars.
30. April 1989. UTLX 75966; Pulp and Chip Equipment in the Southeastern Paper Industry; Seaboard System Woodchip Hopper Car Fleet; Heavy Duty and Special

Type Flat Cars.

31. July 1989. Milwaukee Road Flexi-van Marks I & II; Late Steam Era LPG Tank Cars; What Has Black Markings and is Orange All Over?
32. October 1989. SP/SSW Covered Hopper Cars; KCS 700002-700053 Flat Cars; Two Bay Covered Hoppers from the Forties and Fifties.
33. March 1990. Western Pacific Freight Cars at Merger.
34. April 1990. Double-Door to Single-Door; Reading Covered Hopper Class LOc; A History of Pneumatic Brake Equipment for Railroad Cars 1869-1953; Freight Car Repairs; Early Appliance Car Development.
35. August 1990. Norfolk Southern's 1989-90 Coal Hopper Rebody and New Acquisitions Program; ATSF 90000 Flat Car; CSX 100-139; Central Transportation's 1951 Built Covered Hopper Series; A Pictorial Review of NACC/GERSCO Freight Car Equipment.
36. December 1990. Illinois Central Freight Car Pictorial.
37. February 1991. CP Freight Car Pictorial.
38. April 1991. Midwestern Grain Cars 1; Blue Island Reefers; CHTT 200034;
39. June 1991. Maryland and Pennsylvania Roster; Midwestern Grain Cars 2; Blue Island Reefers 2.
40. August 1991. Plastics Covered Hoppers; Santa Fe Paint Schemes of the 1990s; Blue Island Reefers 3; NW 164000-164999; B&O 475400-475409.
41. January 1992. Evans 4780 of Covered Hoppers.
42. February 1992. ACF 6111 Covered Hopper; ATSF FT-60 Flat Car; More Freight Car Repairs.
43. March 1992. EL 7100-7102 Flats; History of Draft Force Cushioning; SAL 60000-60024.
44. April 1992. Reefers: A Short History of Refrigerator Cars in America 1840-1984.
45. May 1992. Evans 2240/2244 Gondolas.
46. June 1992. Burlington Northern Grain Hoppers.
47. September 1992. CSXT Covered Hoppers.
48. October 1992. UP Class F-50-15 Flat Cars.
49. November 1992. Freight Cars in Service 1.
50. January 1993. Berwick Freight Car Production.
51. February 1993. Auto Racks 1
52. March 1993. Freight Car Review 4.
53. April 1993. Aggregate Hoppers.
54. May 1993. Cryogen Cars, Freight Cars in Service 2, News

AVAILABLE ISSUES:

\$2.50 each:

17/18	19/20	21	22	24	31	32
35	40	41	42			

\$5.00 each:

33	34	36	38	43	45	46
47	48	49	50	51	52	

\$7.00 each:

53